

MK3053CB

Specifications

| | | |
|---------------------------|---|--|
| Capacity | Maximum | 2.98 t x 1.8 m |
| Working radius | Maximum | 14.3 m |
| Lifting height | Maximum | 16.95 m x 610 kg |
| Dimensions | MK3053CB | 3195 mm x 780 mm x 1945 mm |
| Weight main unit | MK3053CB | 2880 kg |
| Hook speed | Maximum | 37.5 m / min. (4th layer, single fall) |
| Hoist rope | Type | IWRC 6 x WS (26) Ø 8mm x 62m |
| Telescopic system | Boom length | 3.1 ~ 10.3 m |
| | Telescoping speed | 7.2 m / 59 sec. |
| | Boom type | Fully automatic 5 section pentagonal telescopic boom 3 stage luffing and extending knuckle boom |
| Boom hoist system | Hoist angle / speed | 0° ~ 85° / 26 sec. |
| Slew system | Slew angle / speed | 360° / 1.1 rpm |
| Outrigger system | Type | Automatic and stepless outriggers |
| | Maximum outriggers | (Length) 4546 mm x (Front) 4557 mm x (Rear) 4335 mm |
| Traction system | Drive | Hydraulic motor driven, stepless speed changer |
| | Travel speed | 0 ~ 2.4 km/h |
| | Gradability STD / WIDE | 17.5° / 24.7° |
| | Ground length x width | 950mm x 180mm |
| | Ground pressure | 0.85kgf / cm² |
| Battery system | Maker | Toshiba |
| | Type | Lithium-ion Titanate Battery |
| | 5-hour rate capacity | DC55V - 135 Ah |
| | Input Voltage/Current | Single phase AC200V / 16A, AC100V / 14A |
| | Charging during operation | Available |
| Motor | Rated output | Variable 7.5 kW AC30V at 2500 min⁻¹ |
| Charging time | (with AC-200V) | 80%: 2h 20 min / 100%: 3h 30 min |
| | (with AC-100V) | 80%: 5h 20 min / 100%: 7h 00 min |
| Continuous operating time | Crane | Up to a full working day if charged during operation. |
| Safe load indicator | Made specifically for Maeda Mini Cranes with a fully programmable working envelope. | |
| Standard equipment | Wireless radio remote control, Overwind protection, Hour meter, White rubber tracks, Hydraulic safety valves, Tilt alarm, EMO switch, Programmable Moment limiter, Working limit settings, Working status lamp, Variable crawler gauge, Load indicator, Data logger, Crane and outrigger interlock system, Winch, 2-ways jibs head, Boom head adapter, 4-fall hook block, Single fall hook. | |
| Optional equipment | Black Rubber Tracks, Add-on battery pack (EBU075) | |



Knuckle boom Mini Crane

MK3053CB

- 2,98 t x 1,8 m max capacity
- 16,95 m max lifting height
- 14,3 m max working radius



Save energy with the two ECO modes.



caledoniancranes.co.uk

MK3053CB/E 2023.12



Your First Choice in Scotland for Crane Sales, Hire, Maintenance & Training.

Scotland's leading Crane Maintenance and Repair company: Mini, Crawler and Mobile Cranes.

CALL 0845 410 0061 caledoniancranes.co.uk info@caledoniancranes.co.uk

Introducing the latest knuckleboom crane from Maeda. The MK3053CB is the fully electric version which is equipped with a strong and reliable lithium-ion battery. It is a fully proportional, radio remote controlled crane with a fully automatic 5-section pentagonal telescopic boom. It also has a fully automatic 3-section pentagonal telescopic negative angle jib.

Automatic and step-less multi outrigger settings, as well as variable crawler gauge makes this crane stand out from any other comparable crane in this segment.

The MK3053CB is still narrow enough to fit through a standard doorway yet boasts a lifting capacity of 2,98 t and a lifting height of 16,95m.



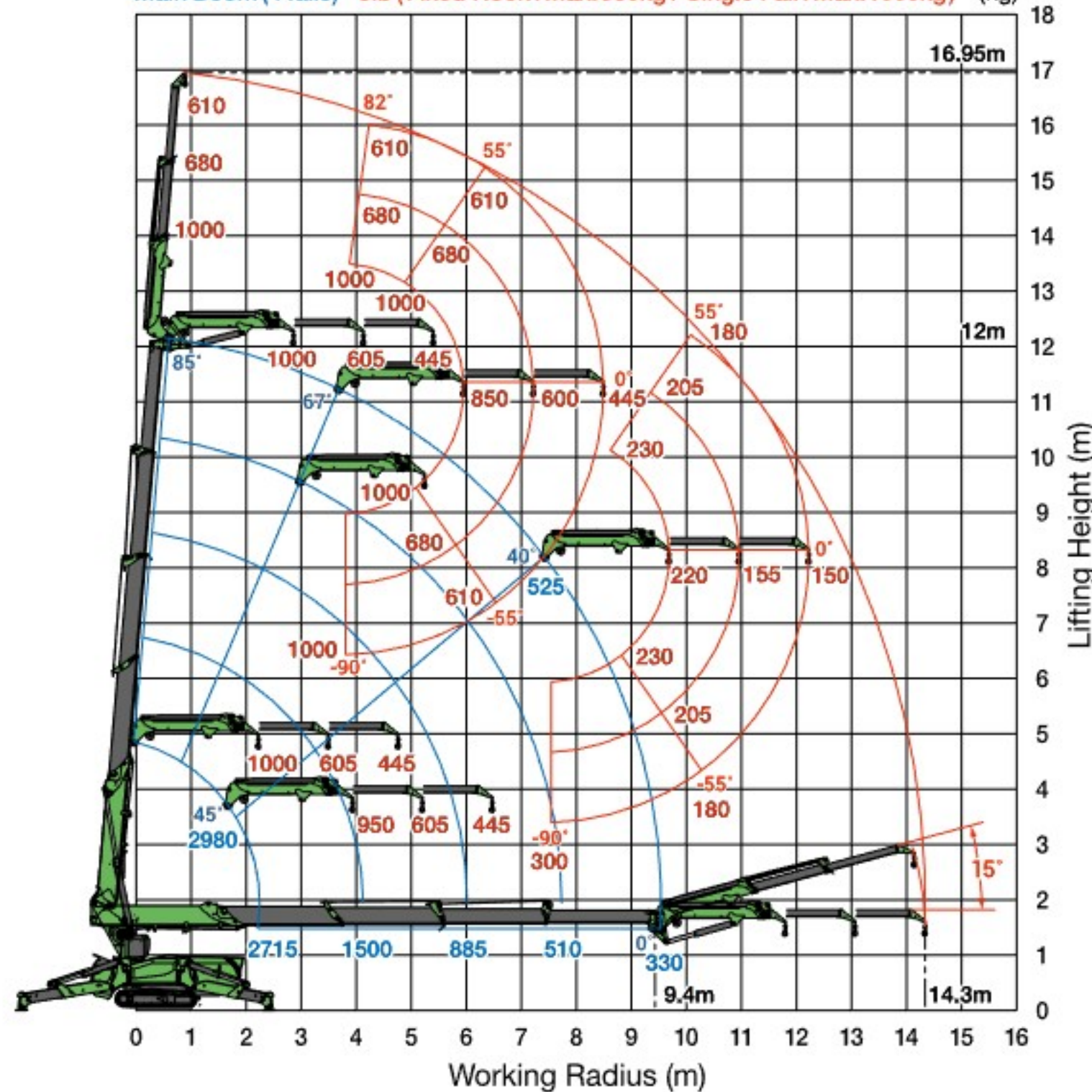
• Fully proportional wireless radio remote control



- 2.98 t max capacity
- 16.95m max lifting height
- Lithium-ion Titanate battery
- Minimal charging time
- Continuous operation while charging
- White rubber tracks as standard
- Automatic & stepless multi outrigger positions
- 7" display
- Negative angle jib (detachable)
- Fully proportional wireless radio remote control
- Working limit settings
- Programmable moment limiter
- Data logger & tilt alarm
- Winch, integrated in boom post
- 4-fall hook block
- Optional add-on battery pack

Working Range Chart Outriggers Position : Max.

Main Boom (4 falls) Jib (Fixed Hook : Max. 950kg / Single Fall : Max. 1000kg) (kg)



This working range chart shows total rated load including boom deflection.



• Variable crawler gauge



• 2-ways jib head position

Dimensions

