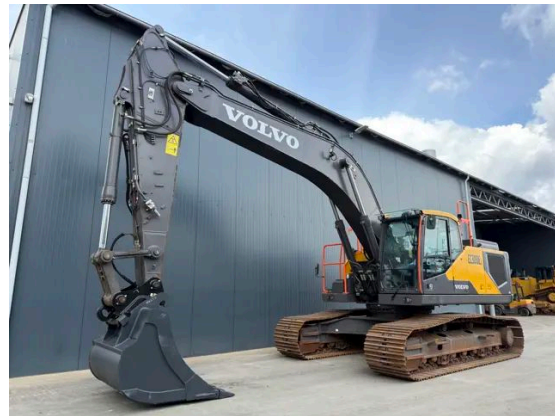


INSPECTION REPORT

VOLVO EC300E L | Only 2000 Hours!

The Volvo EC300EL is a top-of-the-line excavator, equipped with a powerful Volvo D8M engine delivering 189 kW. It features advanced safety and convenience systems including air conditioning, backup camera, backup alarm, and a beacon. The heavy-duty width of the pads is 800mm, and it comes with a mono boom of 6.20m and a stick length of 3.00m. This model is equipped with a new 1.40m digging bucket with teeth, hydraulic quick release, and is piped for hammer use. In immaculate condition, it ensures efficiency and reliability for your projects.



Specifications

Year	2023
Hours	2058
Weight	36.397 kg
Serial number	VCEC300EK00317195
Reference	211921

Features

Engine brand and model	Volvo D8M
Engine power in kW	189 kW
CE	✓
Air conditioning	✓
Width of the pads	800mm
Boom	Mono boom
Length of the mono boom	6.20m
Length of the stick	3.00m
Bucket	New digging bucket with teeth
Width of the bucket	1.40m
Piped	Piped for hammer
AM/FM Radio	✓
Overall condition	In very good and very clean condition.

Documents

Parts book	✓
Operation manual	✓

General Appearance

Stamped serial number checked	Yes
Serial number plate checked	Yes
Paint	★★★★☆
Body work	★★★★☆
Decals	★★★★☆
Bonnet	★★★★☆
Engine cover doors	★★★★☆
Chassis	★★★★☆
Bottom plates	★★★★☆
Counter weight	★★★★☆
Toolbox	★★★★☆
Steps/ladders	★★★★☆
Grab irons	★★★★☆
Cabin	★★★★☆
Pre-cleaner bowl	★★★★☆
Cracks or welds	No

Engine Details And Condition

Engine number	571185
Air cleaner	Clean
Anti-freeze level °C	-25°C
Diesel anti-freeze added	Yes
Diesel level ok	Yes
Cooling liquid level ok	Yes
Engine oil level ok	Yes
Exhaust manifold	★★★★☆
Muffler	★★★★☆
Exhaust stack	★★★★☆
Engine supports	★★★★☆
Hoses	★★★★☆
Good cold start	Yes
Engine power	★★★★☆
Blow by	★★★★☆
Knocking	No
Compression in the radiator	No
Water in the oil	No
Oil in the water	No
Smoke	Normal
Engine leaks	No
Belts and pulleys	★★★★☆
Fan	★★★★☆
Radiator	★★★★☆
Ad blue	✓

Bucket

Overall condition of the bucket	★★★★☆
Bottom	★★★★☆
Sides	★★★★☆
Teeth	★★★★☆

Undercarriage Left In Life In %

Overall condition	70%
Chains	60%
Bushings	50%
Sprockets	60%
Idlers	80%
Bottom rollers	50%
Top rollers	80%
Track pads	80%

Safety Items

Backup alarm	Working
Backup camera	Working
Seat belt	Available
Horn	Working
Beacon	Working

Operator Station

Hourmeter	Working
Air conditioning	Working
Heater	Working
Gauges	Working
Switches	★★★★★
Display	★★★★★
Warning	No warnings available
Mirrors	Not broken
Cabin glass	Not broken
Windshield wipers	Working
Interior lights	Working
Cabin floor	★★★★★
Interior roof	★★★★★
Seat	★★★★★
Door lock	Working

Hydraulics

Hydraulic oil level ok	Yes
Hydraulic lines and fittings	★★★★★
Hydraulic tank/sight glass and cap	★★★★★
Travel motors	★★★★★
High and low travel speed working	Working
Oil level left final drive ok	Yes
Left final drive leaking	No
Oil level right final drive ok	Yes
Right final drive leaking	No
Hydraulic valves leaking	No
Noise hydraulic pump normal	Yes
Operating condition hydraulics	★★★★★

Boom And Stick

Play lift cylinder	★★★★★
Lift cylinders leaking	No
Play boom pen	★★★★☆
Play stick cylinder	★★★★☆
Stick cylinder leaking	No
Play stick pen	★★★★☆
Play bucket cylinder	★★★★☆
Bucket cylinder leaking	No
Play bucket link	★★★★☆
Play bucket pen	★★★★★
Condition monoboom	★★★★★
Condition stick	★★★★☆

Swing Circle


Play on the swing bearing	★★★★☆
Swing gear	★★★★☆
Swing drive oil level ok	Yes
Swing drive leaking	No
Swing brake operating	Yes
Swing noise normal	Yes
Hydraulic swivel leaking	No
Operating condition	★★★★★

Electrical, Starting And Charging System

Alternator functioning	Yes
Wiring	★★★★☆
Batteries	★★★★☆
Starter	★★★★☆
Cabin lights working	Yes
Additional work lights working	Yes

 [+31 \(0\) 77 3999 840](tel:+31(0)773999840)

 sales@smitma.com

 [+31 \(0\) 77 3999 840](https://wa.me/31773999840)