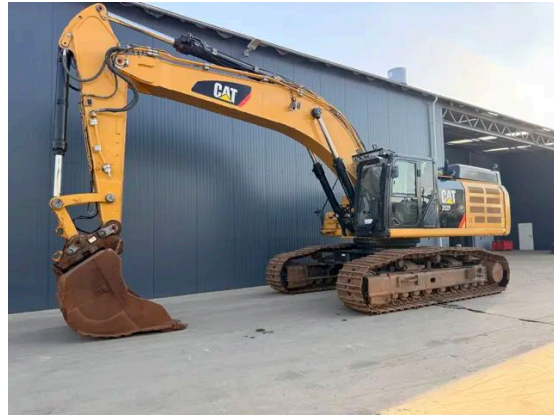


## INSPECTION REPORT

### CATERPILLAR 352F

The Caterpillar 352F Excavator is a powerful and versatile machine, featuring the reliable Caterpillar C13 engine with 317 kW. Equipped with air conditioning, central lubrication, and a backup camera, this model ensures both comfort and safety. The 352F includes a mono boom measuring 6.80 meters, a 2.90-meter stick, and a digging bucket with teeth, 1.60 meters in width. It is piped for hammer use and includes a burst valve on the lift and stick cylinder. Additional features include a retractable undercarriage and an AM/FM radio. This excavator has been certified to have 14,738 hours of operation and remains in good and clean condition.



### Specifications

Year	2016
Hours	14738
Weight	51.700 kg
Serial number	CAT0352FVKBP00389
Reference	213052

### Features

Engine brand and model	Caterpillar C13
Engine power in kW	317kW
EPA	EPA, but sticker not available
Air conditioning	✓
Width of the pads	700mm
Boom	Mono boom
Length of the mono boom	6.80
Length of the stick	2.90
Bucket	Digging bucket with teeth
Width of the bucket	1.60m
Piped	Piped for hammer
AM/FM Radio	✓
Hours	Hours certified by Caterpillar
Overall condition	In good and clean condition.

### Documents

Parts book	✓
Operation manual	✓

## General Appearance

Stamped serial number checked		Yes
Paint	★★★★★	
Body work	★★★★★	
Decals	★★★★★	
Bonnet	★★★★★	
Engine cover doors	★★★★★	
Chassis	★★★★★	
Bottom plates	★★★★★	
Counter weight	★★★★★	
Toolbox	★★★★★	
Steps/ladders	★★★★★	
Grab irons	★★★★★	
Cabin	★★★★★	
Pre-cleaner bowl	★★★★★	
Cracks or welds		No

## Engine Details And Condition

Engine number		4766375
Arrangement number		476-6374
Air cleaner		Clean
Anti-freeze level °C		-33°C
Diesel anti-freeze added		Yes
Diesel level ok		Yes
Cooling liquid level ok		Yes
Engine oil level ok		Yes
Exhaust manifold	★★★★★	
Muffler	★★★★★	
Exhaust stack	★★★★★	
Engine supports	★★★★★	
Hoses	★★★★★	
Good cold start		Yes
Engine power	★★★★★	
Blow by	★★★★★	
Knocking		No
Compression in the radiator		No
Water in the oil		No
Oil in the water		No
Smoke		Normal
Engine leaks		No
Belts and pulleys	★★★★★	
Fan	★★★★★	
Radiator	★★★★★	
Ad blue		✓

## Bucket

Overall condition of the bucket	★★★★★
Bottom	★★★★★
Sides	★★★★★
Teeth	★★★★★

## Undercarriage Left In Life In %

Overall condition	80%
Chains	80%
Bushings	70%
Sprockets	70%
Idlers	80%
Bottom rollers	60%
Top rollers	70%
Track pads	70%

## Safety Items

Backup camera	Working
Seat belt	Available
Horn	Working

## Operator Station

Hourmeter	Working, hours certified by Caterpillar
Air conditioning	Working
Heater	Working
Gauges	Working
Switches	★★★★★
Display	★★★★★
Warning	No warnings available
Interior lights	Working
Cabin floor	★★★★★
Interior roof	★★★★★
Seat	★★★★★

## Hydraulics

Hydraulic oil level ok	Yes
Hydraulic lines and fittings	★★★★★
Hydraulic tank/sight glass and cap	★★★★★
Travel motors	★★★★★
High and low travel speed working	Working
Oil level left final drive ok	Yes
Left final drive leaking	No
Oil level right final drive ok	Yes
Right final drive leaking	No
Hydraulic valves leaking	No
Noise hydraulic pump normal	Yes
Operating condition hydraulics	★★★★★

## Boom And Stick

Play lift cylinder	★★★★★
Lift cylinders leaking	No
Play boom pen	★★★★★
Play stick cylinder	★★★★★
Stick cylinder leaking	No
Play stick pen	★★★★★
Play bucket cylinder	★★★★★
Bucket cylinder leaking	No
Play bucket link	★★★★★
Play bucket pen	★★★★★
Condition monoboom	★★★★★
Condition stick	★★★★★

## Swing Circle


Play on the swing bearing	★★★★★
Swing gear	★★★★★
Swing drive oil level ok	Yes
Swing drive leaking	No
Swing brake operating	Yes
Swing noise normal	Yes
Hydraulic swivel leaking	No
Operating condition	★★★★★

## Electrical, Starting And Charging System

Alternator functioning	Yes
Wiring	★★★★★
Batteries	★★★★★
Starter	★★★★★
Cabin lights working	Few lights don't work
Additional work lights working	Few lights don't work

 [+31 \(0\) 77 3999 840](tel:+31(0)773999840)

 [sales@smitma.com](mailto:sales@smitma.com)

 [+31 \(0\) 77 3999 840](tel:+31(0)773999840)