



Technical Specification

DPX-30020 ACT400V-100kW Resistive Load Bank





1. Testing System	1
2. Supply List.....	1
3. Technical Parameter	1
4. Functions	2
5. Data Processing Software Functions.....	3
6. Protection	5
7. Pictures.....	5
8. After-sale Service.....	5

ACT400V-100kW Resistive Load Bank

1. Testing System

We do not supply generator or UPS, testing cable, PC and printer if not specified.



2. Supply List

The following form presents the accessories provided when we make shipment.

Items	Quantity	Remark
ACT400V-100kW Resistive Load Bank	1	
Suitcase	1	
Power Cord	1	3 meters
RS485	1	10 meters
RS485/RS232/USB Converter	1	
Documents accompanied with shipment	Quantity	Remark
Products Instruction	1	
Data Processing Software U-disk	1	
Packing List	1	

3. Technical Parameter

System Parameter	
Rated Voltage & Frequency	400VAC 3 phase 4 wire, 50/60Hz, phase voltage 230V
Max Load Power	100kW at 400V 3 phase
Load Resolution	1, 2, 2, 5, 10, 20, 20, 40kW
Power Factor	1

Load Tolerance (overall)	$\pm 3\%$
Fan Control Power	AC110V-240V single phase 50/60Hz
Wire Connection	Load bank input——terminal block Control power input——3-pin plug
Communication Interface	RS485
Insulation	F
Way of Working	Continuous Working
Cooling	Forced air, horizontal air intake and cooling
Transportation	With handle
Dimensions	540*292*582mm (L×W×H)
Weight	About 35kgs
Operating Environment Parameter	
Ambient Temperature	-20°C~+50°C
Relative Humidity	≤95%
Atmospheric Pressure	86~106kPa
Brands of Main Components	
Contactor	Schneider
Relay	Omron

4. Functions

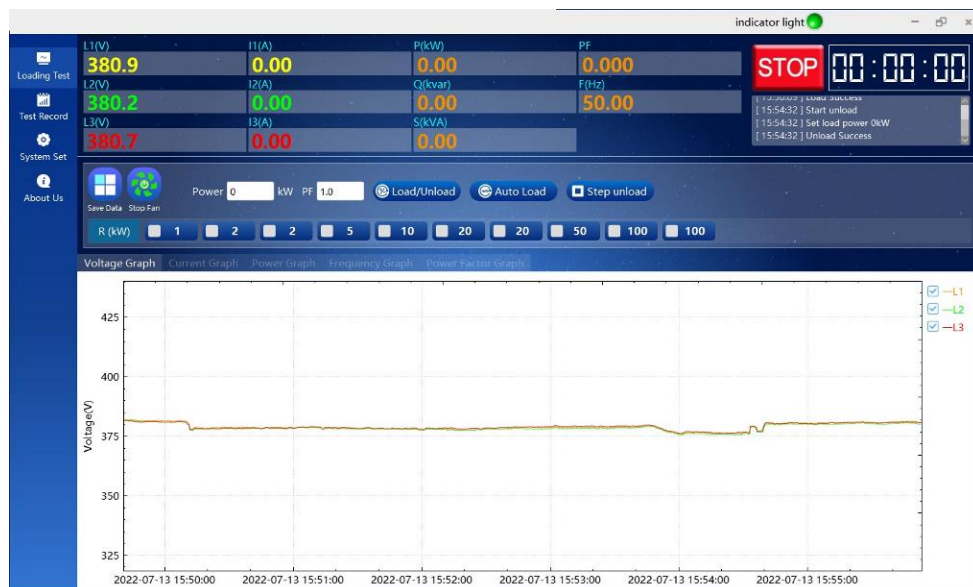
- 1) User could load any power within rated power, can test stable state three-phase voltage, current, active power, power factor, frequency of generator set or UPS.
- 2) Whether load/unload by local control panel or by PC software control, user can pre-set the power then press the master load button.
- 3) Control mode: user can choose local control or intelligent control (PC control)
- 4) Local manual control: there is local control panel in load bank, with multi load steps, min load steps 1kW, controlled by buttons.

- 5) Intelligent control: user can control load bank by data processing software of PC to make automatic load/unload, display, record and manager the test data, form curve, graph and can be printed.
- 6) Control mode interlock: there is switch in control panel to choose control mode, other control mode is invalid if user choose one control mode.
- 7) With data processing software, could form curve of current, active power, power factor, and frequency, can be printed.
- 8) One-key load/unload: user can load or unload with one key easy to control.
- 9) 3 line LED multi-function meter display.

5. Data Processing Software Functions

- 1) Communication type: through RS232, RS485 or USB interface.
- 2) Load mode: manual load or automatic load.
- 3) Manual load: input power and power factor.
- 4) Automatic load: User can set several periods of power and time, and in turn of 0%→25%→50%→75%→100% or 110%, etc or other preset order to make automatic load testing.
- 5) Parallel testing: when several load banks parallel working, parameters of each load bank can be displayed and recorded, so do the final parameters of paralleling working.
- 6) Real-time parameter: Current, voltage, power, power factor, frequency, time, etc could be displayed by software.
- 7) Safety monitoring: User can know the working conditions of load bank through software indicating light. When in abnormal stop protection, software will indicate the reasons of stopping.
- 8) Data collection interval: the min saving interval is 1 second.
- 9) Data saving and in query: testing data could be saved in software, user can query at any time.
- 10) Data display: it could display real-time data and history data; user can print voltage, current, frequency, power graphs and charts.

11) Charts and graphs are output in format of JPG while testing data output in Excel format, and all can be printed.



Data Analyse

Report Summary

Export Report

Preview

Print

Close

Testing Time

2022-07-13 15:54:11

Running Duration

0H0M19S

Test Name

1111

Operator

2222

Form Data

Voltage Graph

Current Graph

Power Graph

Frequency Graph

Power Factor Graph

Record No	Time	L1(V)	L2(V)	L3(V)	I1(A)	I2(A)	I3(A)	P(kW)	Q(kvar)	S(kVA)	PF	F(hz)
1	2022-07-13 15:54:11	376.7	376.2	376.9	13.81	13.99	13.94	9.08	0	9.08	1	50
2	2022-07-13 15:54:12	376.6	376.2	376.8	13.8	13.99	13.94	9.06	0	9.06	1	49.99
3	2022-07-13 15:54:13	376.3	376	376.7	13.8	13.98	13.94	9.06	0	9.06	1	49.99
4	2022-07-13 15:54:14	376.3	376	376.7	13.8	13.98	13.94	9.06	0	9.06	1	49.99
5	2022-07-13 15:54:15	376.2	375.8	376.5	13.8	13.98	13.94	9.06	0	9.06	1	49.98
6	2022-07-13 15:54:16	376.2	375.7	376.4	13.79	13.97	13.92	9.05	0	9.05	1	49.98
7	2022-07-13 15:54:17	376.2	375.9	376.5	13.79	13.97	13.93	9.06	0	9.06	1	49.98
8	2022-07-13 15:54:18	376.2	375.9	376.5	13.79	13.98	13.93	9.06	0	9.06	1	49.98
9	2022-07-13 15:54:19	376.2	375.9	376.4	13.79	13.97	13.93	9.06	0	9.06	1	49.97
10	2022-07-13 15:54:20	376.2	375.8	376.3	13.79	13.97	13.93	9.05	0	9.05	1	49.97
11	2022-07-13 15:54:21	376.3	375.9	376.4	13.79	13.98	13.92	9.06	0	9.06	1	49.97
12	2022-07-13 15:54:22	376.2	375.8	376.4	13.79	13.98	13.92	9.05	0	9.05	1	49.97
13	2022-07-13 15:54:23	376.3	375.9	376.4	13.79	13.98	13.92	9.06	0	9.06	1	49.96
14	2022-07-13 15:54:24	376.3	375.9	376.4	13.79	13.98	13.92	9.06	0	9.06	1	49.96
15	2022-07-13 15:54:25	376.3	375.7	376.4	13.8	13.98	13.92	9.05	0	9.05	1	49.96
16	2022-07-13 15:54:26	376.2	375.7	376.5	13.8	13.97	13.92	9.05	0	9.05	1	49.96

Export excel

6. Protection

- 1) User can press the emergency stop button in the panel to unload immediately when the load bank is abnormal while working.
- 2) Over-load: Automatic load dump and give alarm when voltage is over safety thresholds.
- 3) Over-heat protection: Automatic load dump and give alarm when temperature is over safety thresholds.
- 4) Protection button: there are some protection buttons can be switched off when false alarm or for special requirements.

7. Pictures





Suitcase

8. After-sale Service

- (1). Warranty period is one year.
- (2). If required, technicians will be sent to help customer install, debug or repair the machine by the user's cost.
- (3). Customer has the right of technical consulting service for free forever.