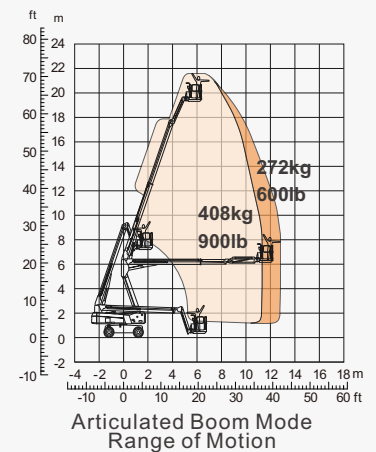
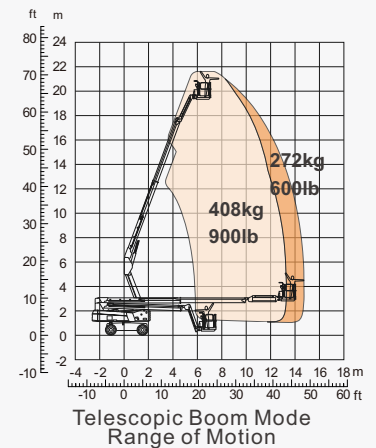


SPECIFICATIONS

Dimension		Metric	British
Max. Working Height	@272kg	21.60m	70'10"
	@408kg	21.10m	69'3"
Max. Platform Height	@272kg	19.60m	64'4"
	@408kg	19.10m	62'8"
Max. Operating Range(+0.6m) Telescopic Boom Mode	@272kg	14.70m	48'3"
	@408kg	13.40m	43'11"
Max. Operating Range(+0.6m) Articulated Boom Mode	@272kg	12.80m	41'11"
	@408kg	11.50m	37'9"
Max. Platform Range Telescopic Boom Mode	@272kg	14.10m	46'3"
	@408kg	12.80m	41'11"
Max. Platform Range Articulated Boom Mode	@272kg	12.20m	40'
	@408kg	10.90m	35'9"
Platform Size(Length xWidth)		2.30x1.00m	7'6"x3'3"
Flatbed Transport Dimensions(LxWxH)		10.05x2.44x2.58m	33'x8'x8'6"
Wheelbase		2.40m	7'10"
Ground Clearance		0.31m	1'
Turntable Tailswing		1.39m	4'7"
Performance			
S.W.L		272/408kg	600/900lb
Max. Occupants		2	2
Platform Rotation		180°	180°
Jib Movement		136°(-71°~+65°)	136°(-71°~+65°)
Main Boom Max. Angle		72°(-2~+70°)	72°(-2~+70°)
Riser Variation Angle		76°(-6~+70°)	76°(-6~+70°)
Turret Rotation		360° Continuous	360° Continuous
Gradeability		45%	45%
Max. Chassis Angle(X/Y)		5°/5°	5°/5°
Turning Radius(Inside/Outside) -Front Wheel Steering		3.0/4.7m	9'10"/15'50"
Foam-Filled Tyres (Standard Equipment)		335/40D665NHS	335/40D665NHS
Desert tire(Optional Items)		385/35D665NHS	385/35D665NHS
Power			
Diesel Engine		Kubota D1105	Kubota D1105
Engine Power		18.2kW	18.2kW
Mild Hybrid Motor		80VDC/10kW	80VDC/10kW
Lithium Battery		80V67.5Ah	80V67.5Ah
Emergency Power System		12V	12V
Diesel Tank		120L	31gal
Hydraulic Tank		95L	25gal
Weight			
Overall Weight		10200kg	22487lb



Mild



FEATURES

Standard Items

- Power to Platform
- 4WD Closed Loop Positive Traction Drive System
- Oscillating Axle
- Self-Leveling Platform
- Full Drive Height
- Fully Proportional Multi-Function Controls
- Emergency Shut-Off on Platform & Chassis
- Auxiliary Power Unit
- Multi-Axis Tilt Sensor
- Tilt Alarm and Horn
- Overload Protection System
- All Motion Alarm
- Four Wheel SAHR Braking System
- Automotive Horn
- Engine Shut Down Protection
- Flashing Beacon (Continuous)
- Hour Meter
- Machine Tie-Downs and Lifting Lugs
- Lanyard Attachments
- Foam-Filled Tyres
- On-Board Diagnostics

ZHEJIANG DINGLI MACHINERY CO., LTD.

Address: 188 Qihang Road, Leidian Town, Deqing, Zhejiang, P.R.C

Telephone: +86(572)8681688

E-Mail: export@cndingli.com

<https://en.cndingli.com>

Due to continuous technology updates, technical parameters are subject to change without notice. This picture book is for reference only, the actual product shall prevail. The copyright is owned by zhejiang dingli, any content may not be copied for any purpose without written permission.

2025-11

