



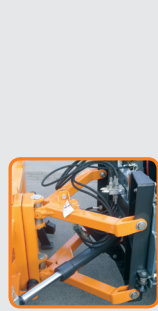
RPS SNOW PLOUGHS are intended for clearing all types of roads. RPS is designed with a robust frame and oscillating links and springs that allow the plough to clear an obstacle encountered on the road. Because of the placement of the links and springs, the segment stays in touch with the surface even when clearing an obstacle, while not pressing too hard on the surface in its normal position. It therefore protects the surface and blades from excessive wear. Suitable ploughing speed: up to 40 km/h. The plough is mounted (attached) to a vehicle with a mounting plate and a hydraulic system for controlling the plough.

Standard equipment:

- Welded frame with four segments (higher side segments)
- Parallelogram
- Protection with rigid oscillating links and preloaded spring
- Hydraulic lifting/lowering
- Hydraulic turning left/right (angle up to 30°)
- Anti-impact safety valve
- Hydraulic installation with quick mounts
- Two support struts for storing the plough
- A/5 or B/3 mounting plate
- Sliders
- Side fenders (L+R)
- RAL 2011 colour

Additional equipment:

- Warning markings (red/white) reflective sticker
- Light signalisation with end-outline flags and reflex reflector
- Polyurethane expansion of side segment
- Support wheels
- Rubber snow guard
- Electro-hydraulic power unit, 12 or 24 V with remote control
- Additional lights on the plough
- PVC snow screen
- Steel, rubber, polyurethane, combined selection of blades
- Un-mounting cart
- 3-point mounting



Parallelogram



Protection with rigid oscillating links and preloaded spring



Dampeners for levelling the plough tilt



Slider



Side fender



Support strut for storing the plough



Electro-hydraulic power unit, 12 or 24 V



Rubber snow guard



Polyurethane expansion of side segment



Support wheel (mechanic or hydraulic)

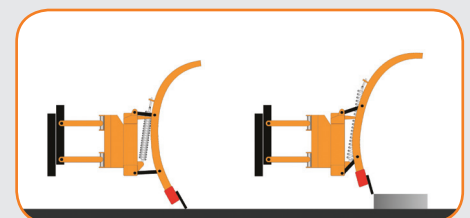


Additional lights on the plough

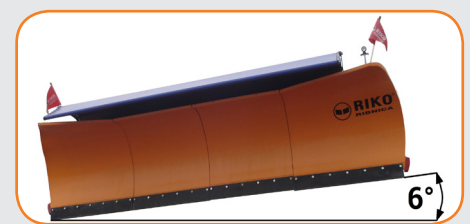


Signalisation with end-outline flags

RPS	Unit	30	32	34	36	38	40
Width at blades	mm	3000	3200	3400	3600	3800	4000
Total width	mm	3100	3370	3570	3770	3970	4170
Ploughing width (30°)	mm	2600	2770	3000	3120	3300	3460
Height of plough (middle)	mm	1100	1100	1100	1100	1100	1100
Height of plough (side)	mm	1200	1200	1200	1200	1200	1200
Angle of blade	°	20	20	20	20	20	20
Plough mass	kg	950	970	990	1010	1030	1070
Number of segments	pc.	4	4	4	4	4	4
Mounting on a vehicle	t	7	7,5	8	8,5	9	9



Protection with polyurethane oscillating links, which allow the plough to clear obstacles of up to 120 mm



Tilt adjustment of plough: up to 6°. The plough is levelled by two rubber dampeners attached to the plough frame