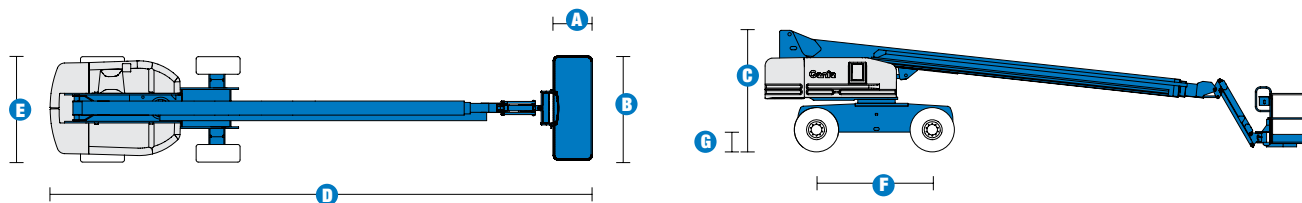


Specifications



| MODEL | S™-85 | |
|---------------------------------------|---------|------------|
| MEASUREMENTS | Metric | US |
| Working height maximum* | 27.91 m | 91 ft |
| Platform height maximum | 25.91 m | 85 ft |
| Horizontal reach maximum | 23.32 m | 76 ft 6 in |
| Below ground reach | 2.90 m | 9 ft 6 in |
| A Platform length | 0.91 m | 3 ft |
| B Platform width | 2.44 m | 8 ft |
| C Height - stowed | 2.80 m | 9 ft 2 in |
| D Length - stowed | 12.19 m | 40 ft |
| Length - transport (jib tucked under) | 11.58 m | 38 ft |
| E Width | 2.49 m | 8 ft 2 in |
| F Wheelbase | 2.84 m | 9 ft 4 in |
| G Ground clearance - centre | 0.33 m | 13 in |

| PRODUCTIVITY | | |
|-------------------------------|----------------------------|------------|
| Lift capacity | 227 kg | 500 lbs |
| Platform rotation | 160° | 160° |
| Vertical jib rotation | 135° | 135° |
| Turntable rotation | 360° continuous | |
| Turntable tailswing | 1.42 m | 4 ft 8 in |
| Drive speed - stowed | 5.3 km/h | 3.3 mph |
| Drive speed - raised/extended | 1.04 km/h | 0.65 mph |
| Gradeability - 4WD stowed** | 45% | 45% |
| Turning radius: inside | 3.66 m | 12 ft |
| outside | 6.55 m | 21 ft 6 in |
| Controls | 12V DC proportional | |
| Tyres - RT lug - Foam filled | Foam Filled 18-625, 16 ply | |

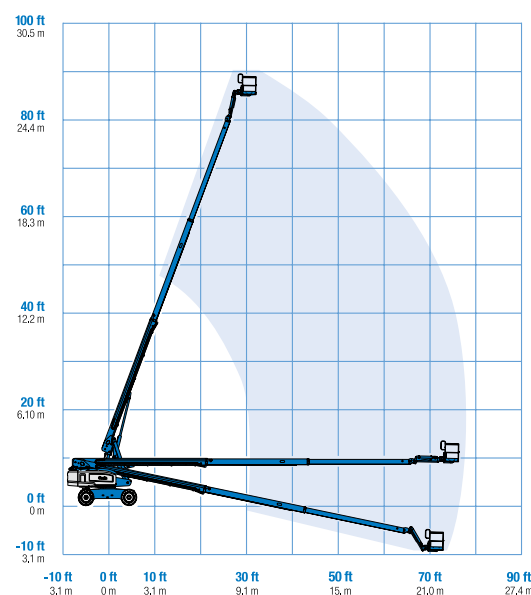
| POWER | | |
|-------------------------|---|--------|
| Power source | Deutz TD2011 L04i 4 cylinder turbo diesel 55 kW (74 hp) | |
| Auxiliary power unit | 12V DC | 12V DC |
| Hydraulic tank capacity | 151 L | 40 gal |
| Fuel tank capacity | 132 L | 35 gal |

| WEIGHT*** | | |
|-----------|-----------|------------|
| 4WD | 17,563 kg | 38,719 lbs |

STANDARDS COMPLIANCE ANSI A92.5, CSA B354.4, CE Compliance, AS 1418.10

* The metric equivalent of working height adds 2 m to platform height. U.S. adds 6 ft to platform height.
 ** Gradeability applies to driving on slopes. See operator's manual for details regarding slope ratings.
 *** Weight will vary depending on options and/or country standards.

RANGE OF MOTION S™-85



Features

STANDARD FEATURES

MEASUREMENTS

- 27.91 m (91 ft) working height
- 23.32 m (76 ft 6 in) horizontal reach
- 227 kg (500 lbs) lift capacity

PRODUCTIVITY

- Self-leveling platform
- Hydraulic platform rotation
- Fully proportional Hall effect joystick controls
- Drive enable
- AC power cord to platform
- Horn
- Hour meter
- Tilt alarm
- Descent alarm
- 360° continuous turntable rotation
- 4WD
- Positive traction drive
- Two speed wheel motors
- Hydraulic oil cooler
- Alarm package
- Lockable platform control box covers

POWER

- 12V DC auxiliary power
- Deutz turbocharged diesel 74 hp (55 kW)
- Anti-restart engine protection
- Auto engine fault shutdown
- Engine gauge package

OPTIONS & ACCESSORIES

PRODUCTIVITY

- Platform swing gate
- Half mesh platform inserts with swing gate
- Platform top auxiliary rail
- Air line to platform
- Hostile environment kit
- Deluxe hostile environment kit
- Platform work lights
- Front driving lights

POWER OPTIONS

- AC generator packages (240V/50Hz, 7000W)
- Cold Weather Packages
- Diesel scrubber/spark arrestor muffler (catalytic muffler)
- Intake air pre-cleaner

PLATFORM OPTIONS

- Steel 8 ft (2.44 m)
- Steel 6 ft (1.83 m)

AXLE

- Fixed width with active oscillation

TIRE OPTIONS

- Rough terrain foam-filled (standard)
- Rough terrain non-marking foam-filled



Genie Australia – Toll free number 1800 788 633

Brisbane (Head Office)
33 Kimberley Street
Darra QLD 4076

Sydney
74 Glendenning Road
Glendenning NSW 2761

Melbourne
374 Hammond Road
Dandenong VIC 3175

Perth
126 Sheffield Road
Welshpool WA 6106

Genie United States Distributed by:

18340 NE 76th Street
P.O. Box 97030
Redmond, Washington
98073-9730