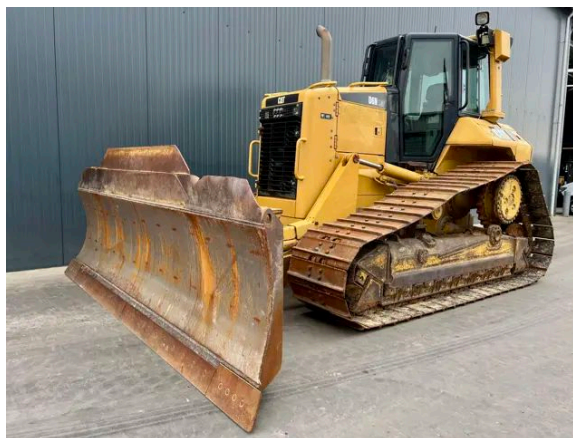


## CATERPILLAR D6N LGP

### Description

Caterpillar D6N LGP, Engine brand Caterpillar , C6.6, 129 kW, EPA, Air conditioning, Erops cabin, 6-way blade, Width of the blade 4.07m, Differential steering, Ripper valve, System one undercarriage, Width of the pads 710mm, Draw bar, New ripper available, ask for quotation, Hours certified by Caterpillar, In very good and clean condition.



Year	2011
Hours	14587
Weight	18.800 kg
Serial number	CAT00D6NAGHS00890
Reference	207636

[Download photos](#)


**CONTACT US:**  
**SALES@SMITMA.COM**  
**+31(0)773999840**

New/Excellent  
★★★★★

Very good  
★★★★☆

Good  
★★★☆☆

Fair  
★★★☆☆

Poor  
★★★☆☆

# INSPECTION REPORT

## FEATURES

Engine brand	Caterpillar
Engine model	C6.6
Engine power in kW	129 kW
EPA	✓
Air conditioning	✓
Erops cabin	✓
Blade	6-way blade
Width of the blade	4.07m
Steering	Differential steering
Ripper or valve	Ripper valve
Width of the pads	710mm
Draw bar	✓
New ripper available, ask for quotation	✓
Hours	Hours certified by Caterpillar
Overall condition	In very good and clean condition.

## DOCUMENTS

Parts book	✓
Operation manual	✓

## GENERAL APPEARANCE

Stamped serial number checked	Yes
Serial number plate checked	Yes
Paint	★★★★★
Decals	★★★★★
Bonnet	★★★★★
Engine cover doors	★★★★★
Grab irons	★★★★★
Cabin	★★★★★
Belly plate	★★★★★

## ENGINE DETAILS AND CONDITION

Engine number	C6E36123
Arrangement number	319-7201
EPA sticker available	Yes

Air cleaner	Clean
Anti-freeze level °C	-36°C
Diesel anti-freeze added	Yes
Diesel level ok	Yes
Cooling liquid level ok	Yes
Engine oil level ok	Yes
Exhaust manifold	★ ★ ★ ★ ★
Muffler	★ ★ ★ ★ ★
Exhaust stack	★ ★ ★ ★ ★
Engine supports	★ ★ ★ ★ ★
Hoses	★ ★ ★ ★ ★
Good cold start	Yes
Engine power	★ ★ ★ ★ ★
Blow by	★ ★ ★ ★ ★
Knocking	No
Compression in the radiator	No
Water in the oil	No
Oil in the water	No
Smoke	Normal
Engine leaks	No
Belts and pulleys	★ ★ ★ ★ ★
Fan	★ ★ ★ ★ ★
Radiator	★ ★ ★ ★ ★

## UNDERCARRIAGE LEFT IN LIFE IN %

Overall condition	70% GOOD!
Chains	70%
Bushings	80%
Sprockets	90%
Idlers	70%
Bottom rollers	70%
Top rollers	90%
Track pads	30%

## OPERATOR STATION

Hourmeter	Working, hours certified by Caterpillar
Air conditioning	Not Working
Heater	Working
Gauges	Working

Switches	★★★★★
Display	★★★★★
Warning	No Warnings Available
Cabin glass	Not broken
Windshield wipers	Few don't work
Interior lights	Working
Cabin floor	★★★★★
Interior roof	★★★★★
Seat	★★★★★
Door lock	Working

## STEERING

Steering operating condition	★★★★★
------------------------------	-------

## FRAME AND BLADE

Moldboard skin	★★★★★
Cutting edge	★★★★★
Play dozer frame	★★★★★
Play blade pin	★★★★★
Note: Central blade pin play	
Play push arms	★★★★★
Play lift cylinder	★★★★★
Lift cylinders leaking	No
Play tilt cylinder	★★★★★
Tilt cylinder leaking	No
Play angle cylinders	★★★★★
Angle cylinders leaking	No
Play equaliser bar	★★★★★
Cracks or welds	Yes
Note: Blade	

## HYDRAULICS

Hydraulic oil level ok	Yes
Hydraulic lines and fittings	★★★★★
Hydraulic tank/sight glass and cap	★★★★★
Hydraulic valves leaking	No
Noise hydraulic pump normal	Yes
Operating condition hydraulics	★★★★★

## BRAKE

Service brake operation	★★★★★
Parking brake operation	★★★★★

## DRIVE TRAIN/TRANSMISSION

Transmission fully operational in all gears forward and reverse	Yes
Transmission oil level ok	Yes
Transmission noisy	No
Oil level left final drive ok	Yes
Oil level right final drive ok	Yes
Drive chain leaks	No

## ELECTRICAL, STARTING AND CHARGING SYSTEM

Alternator functioning	Yes
Wiring	★★★★★
Batteries	★★★★★
Starter	★★★★★
Cabin lights working	Yes
Additional work lights working	Yes

## SAFETY ITEMS

Backup alarm	Working
Seat belt	Available
Horn	Working

New/Excellent  
★★★★★

Very good  
★★★★★

Good  
★★★★★

Fair  
★★★★★

Poor  
★★★★★

