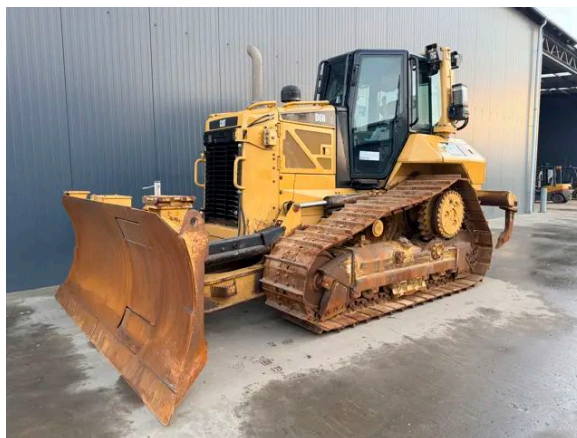


CATERPILLAR D6N XL - FOLDABLE BLADE

Description

Caterpillar D6N XL, Engine brand Caterpillar, C6.6, 129kW, CE, Emission level IIIB, Air conditioning, Erops cabin, Foldable 6-way blade, Width of the blade 3,05m, Differential steering, Multi shank ripper, Width of the pads 600mm, Central lubrication, Backup camera, Fast fuel system, Hours certified by Caterpillar, In very good and clean condition.



Year	2015
Hours	11243
Weight	21.300 kg
Serial number	CAT00D6NKP01053
Reference	211150

[Download photos](#)


CONTACT US:
SALES@SMITMA.COM
+31(0)773999840

New/Excellent
★★★★★

Very good
★★★★☆

Good
★★★☆☆

Fair
★★★☆☆

Poor
★★★☆☆

INSPECTION REPORT

FEATURES

Engine brand	Caterpillar
Engine model	C6.6
Engine power in kW	129kW
CE	✓
Emission level	IIIB
Air conditioning	✓
Erops cabin	✓
Blade	Foldable 6-way blade
Width of the blade	3,05m
Steering	Differential steering
Ripper or valve	Multi shank ripper
Width of the pads	600mm
Fast fuel system	✓
Hours	Hours certified by Caterpillar
Overall condition	In very good and clean condition.

DOCUMENTS

CE document	CE document available
Parts book	✓
Operation manual	✓

GENERAL APPEARANCE

Stamped serial number checked	Yes
Serial number plate checked	Yes
Paint	★★★★★
Decals	★★★★★
Bonnet	★★★★★
Engine cover doors	★★★★★
Chassis	★★★★★
Toolbox	★★★★★
Grab irons	★★★★★
Cabin	★★★★★
Belly plate	★★★★★
Pre-cleaner bowl	★★★★★

ENGINE DETAILS AND CONDITION

Engine number	C8N24375
Arrangement number	454-5775
Air cleaner	Clean
Anti-freeze level °C	-36°C
Diesel anti-freeze added	Yes
Diesel level ok	Yes
Cooling liquid level ok	Yes
Engine oil level ok	Yes
Exhaust manifold	★★★★★
Muffler	★★★★★
Exhaust stack	★★★★★
Engine supports	★★★★★
Hoses	★★★★
Good cold start	Yes
Engine power	★★★★★
Blow by	★★★★★
Knocking	No
Compression in the radiator	No
Water in the oil	No
Oil in the water	No
Smoke	Normal
Engine leaks	No
Belts and pulleys	★★★★★
Fan	★★★★★
Radiator	★★★★★

UNDERCARRIAGE LEFT IN LIFE IN %

Overall condition	70%
Chains	70%
Bushings	70%
Sprockets	80%
Idlers	70%
Bottom rollers	70%
Top rollers	60%
Track pads	80%

OPERATOR STATION

Hourmeter	Working, hours certified by Caterpillar
Air conditioning	Working
Heater	Working
Gauges	Working
Switches	★★★★★
Display	★★★★★
Warning	No Warnings Available
Cabin glass	Not broken
Windshield wipers	Working
Interior lights	Working
Cabin floor	★★★★★
Interior roof	★★★★★
Seat	★★★★★

STEERING

Steering operating condition	★★★★★
------------------------------	-------

FRAME AND BLADE

Moldboard skin	★★★★★
Cutting edge	★★★★★
Play dozer frame	★★★★★
Play blade pin	★★★★★
Play lift cylinder	★★★★★
Lift cylinders leaking	No
Play tilt cylinder	★★★★★
Tilt cylinder leaking	No
Play angle cylinders	★★★★★
Angle cylinders leaking	No
Play equaliser bar	★★★★★
Cracks or welds	No

RIPPER

Play ripper	★★★★★
Cylinders leaking	No
Ripper frame	★★★★★
Number of ripper shanks	3

HYDRAULICS

Hydraulic oil level ok	Yes
Hydraulic lines and fittings	★★★★★

Hydraulic tank/sight glass and cap	★★★★★
Hydraulic valves leaking	No
Noise hydraulic pump normal	Yes
Operating condition hydraulics	★★★★★

BRAKE

Service brake operation	★★★★★
Parking brake operation	★★★★★

DRIVE TRAIN/TRANSMISSION

Transmission fully operational in all gears forward and reverse	Yes
Transmission oil level ok	Yes
Transmission noisy	No
Oil level left final drive ok	Yes
Oil level right final drive ok	Yes
Drive chain leaks	No

ELECTRICAL, STARTING AND CHARGING SYSTEM

Alternator functioning	Yes
Wiring	★★★★★
Batteries	★★★★★
Starter	★★★★★
Cabin lights working	Yes
Additional work lights working	Yes

SAFETY ITEMS

Backup alarm	Working
Backup camera	Working
Seat belt	Available
Horn	Working

New/Excellent
★★★★★

Very good
★★★★★

Good
★★★★★

Fair
★★★★★

Poor
★★★★★

