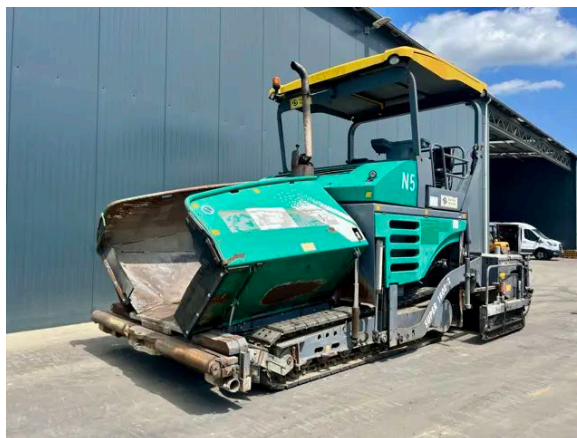


VOGELE SUPER 1800-2 | 6 METER SCREED

Description

Vögele super 1800-2, Engine brand Perkins, 1106d-e66t, 129,6, EPA, CE, Track driven, 16.AB/AB600-2 TV, 600, Tamping & vibrating function, Electrical heated, Hydraulic side plates, Hydraulic crown adjustment, Vögele level control, 2 grade & 1 slope control, Hard cover roof, Central lubrication, Genuine hours, In good and clean condition



Year	2009
Hours	11837
Weight	19.300 kg*
Serial number	11821696
Reference	207955

[Download photos](#)


CONTACT US:
SALES@SMITMA.COM
+31(0)773999840

New/Excellent
★★★★★

Very good
★★★★☆

Good
★★★☆☆

Fair
★★★☆☆

Poor
★★★☆☆

Copyright Smitma BV



INSPECTION REPORT

FEATURES

Engine brand	Perkins
Engine model	1106d-e66t
Engine power in kW	129,6
EPA	✓
CE	✓
Track driven	✓
Screed model	16.AB/AB600-2 TV
Width of the screed	600
Screed function	Tamping & vibrating function
Screed heating	Electrical heated
Hydraulic side plates	✓
Hydraulic crown adjustment	✓
Brand high leveling	Vogele level control
Roof	Hard cover roof
Central lubrication	✓
Hours	Genuine hours
Overall condition	In good and clean condition

DOCUMENTS

Parts book	✓
Operation manual	✓

GENERAL APPEARANCE

Stamped serial number checked	Yes
Serial number plate checked	Yes
Paint	★★★★★
Body work	★★★★★
Decals	★★★★★
Bonnet	★★★★★
Engine cover doors	★★★★★
Chassis	★★★★★
Steps/ladders	★★★★★
Grab irons	★★★★★
Cabin	★★★★★
Pre-cleaner bowl	★★★★★

Central greasing working	Yes
Cracks or welds	No
Condition of the hopper plates in mm	9 mm
Condition of the hopper	★★★★★
Condition of the augers	★★★★★

ENGINE DETAILS AND CONDITION

EPA sticker available	Yes
Air cleaner	New
Anti-freeze level °C	32
Diesel anti-freeze	Yes
Diesel level ok	Yes
Cooling liquid level ok	Yes
Engine oil level ok	Yes
Exhaust manifold	★★★★★
Muffler	★★★★★
Exhaust stack	★★★★★
Engine supports	★★★★★
Hoses	★★★★★
Good cold start	Yes
Engine power	★★★★★
Blow by	★★★★★
Knocking	No
Compression in the radiator	No
Water in the oil	No
Oil in the water	No
Smoke	Normal
Engine leaks	No
Belts and pulleys	★★★★★
Fan	★★★★★
Radiator	★★★★★

UNDERCARRIAGE LEFT IN LIFE IN %

Overall condition	75
Track pads	80
Track chains and sprockets	70

OPERATOR STATION

Hourmeter	Working
-----------	---------

Gauges	Working
Switches	★★★★★
Display	★★★★★
Warning	No warnings available
Seat	★★★★★

HYDRAULICS

Hydraulic oil level	Yes
Hydraulic lines and fittings	★★★★★
Hydraulic tank/sight glass and cap	★★★★★
Hydraulic valves leaking	No
Noise hydraulic pump normal	No
Operating condition hydraulics	★★★★★

DRIVE TRAIN/TRANSMISSION

Transmission oil level ok	Yes
Transmission noisy	No
Oil level rear left final drive ok	Yes
Oil level rear right final drive ok	Yes
Drivetrain leaks	No

ELECTRICAL, STARTING AND CHARGING SYSTEM

Alternator functioning	Yes
Wiring	★★★★★
Batteries	★★★★★
Starter	★★★★★
Cabin lights working	Yes
Additional work lights working	Yes

SAFETY ITEMS

Horn	Working
Beacon	Working

GEARBOX

Gearbox worms checked	Yes
Gearbox pumps checked	Yes
Gearbox conveyor checked	Yes

New/Excellent ★★★★★	Very good ★★★★☆	Good ★★★☆☆	Fair ★★★☆☆	Poor ★☆☆☆☆
------------------------	--------------------	---------------	---------------	---------------

Copyright Smilma BV

